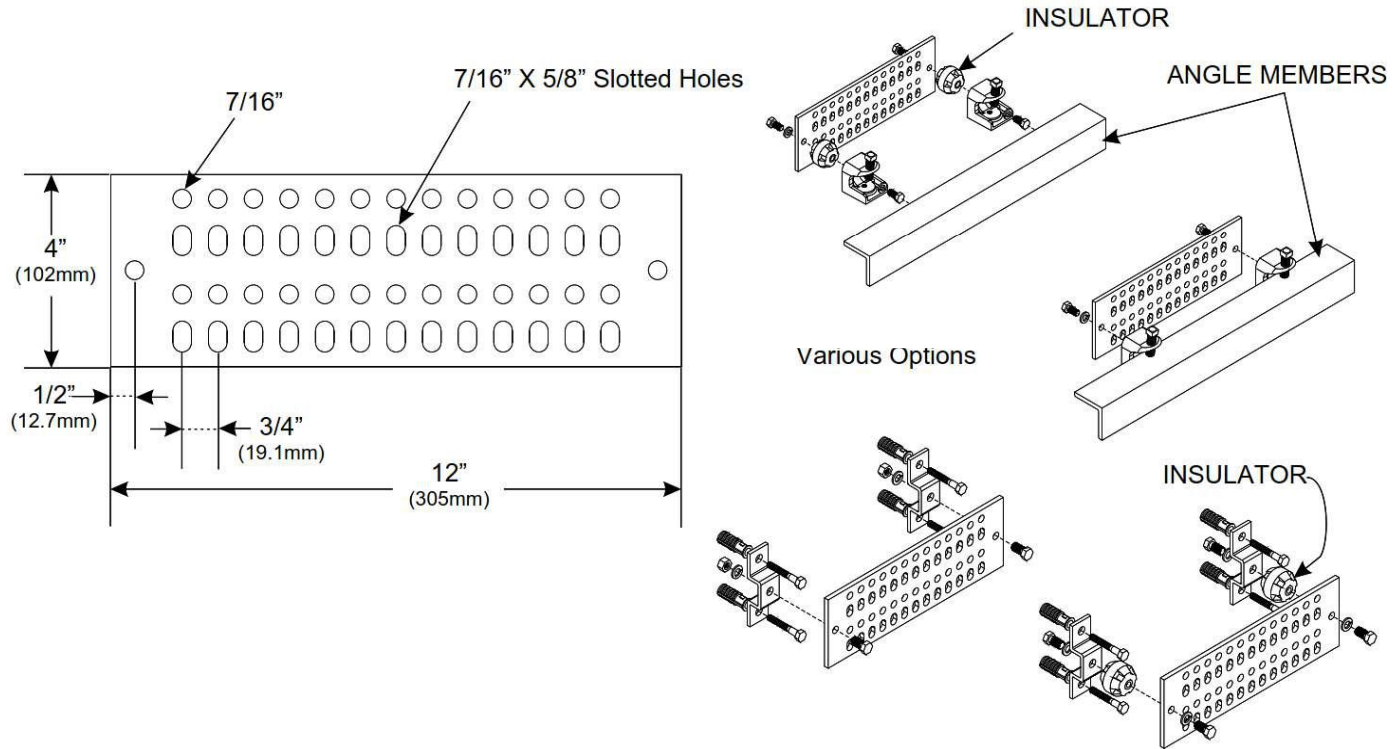


## FM-GB0412 Series Ground Buss Bar Kits for Coaxial Cable Grounding Applications

### TYPICAL APPLICATIONS



### PRODUCT DESCRIPTION

FM-GB0412 series Ground Buss Bar Kits provide a single, versatile solution to create a central ground point at your site. They are manufactured from 1/4" (6.4mm) thick solid copper and incorporate twenty-six pairs of 7/16" holes. By slotting one hole in each pair of 7/16" holes, the ground buss bar accommodates any lug-hole spacing from 3/4" to 1". Ground buss bar kits are available with or without attachment hardware and are also available with an optional tin plated finish.

